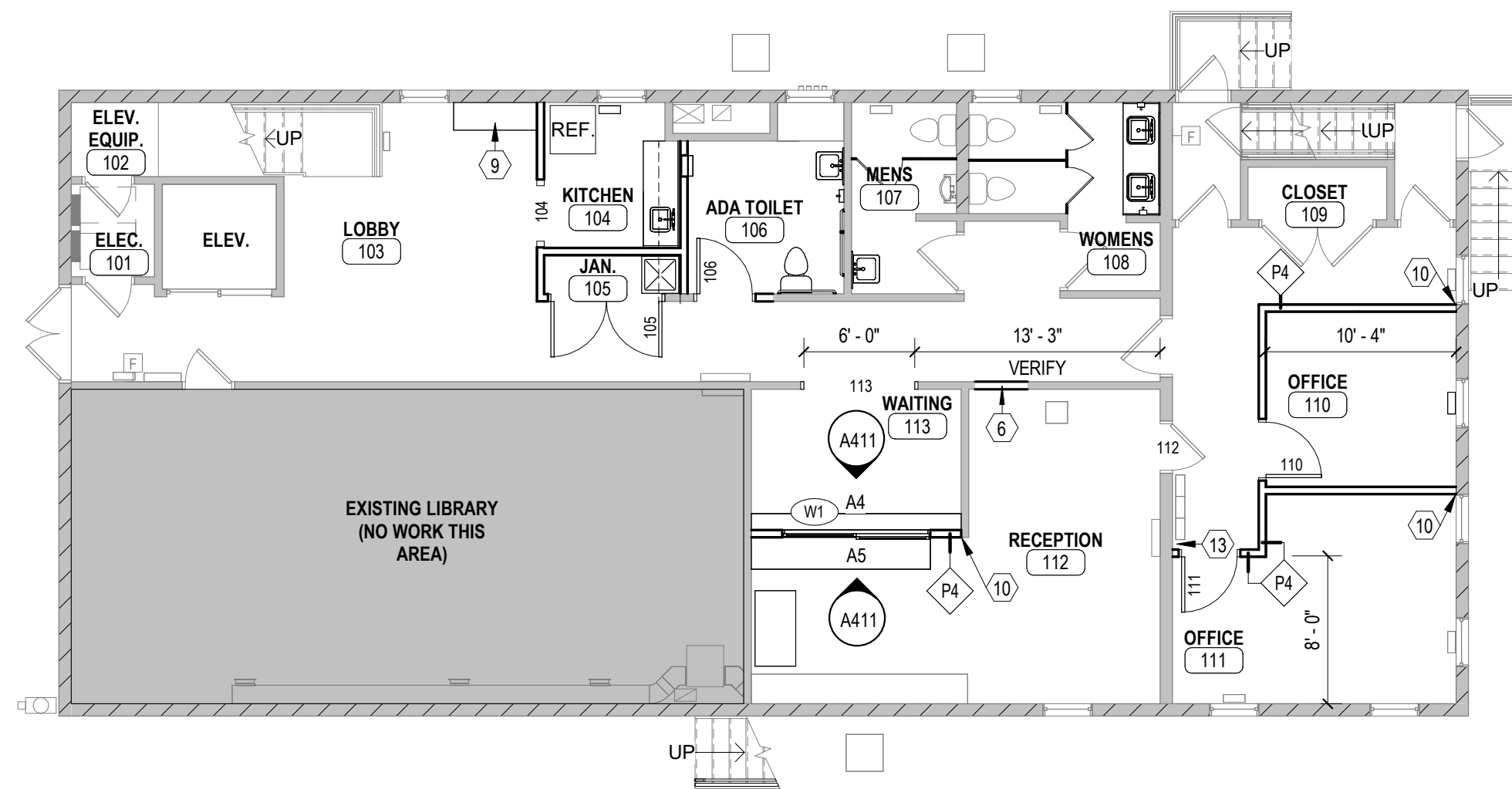
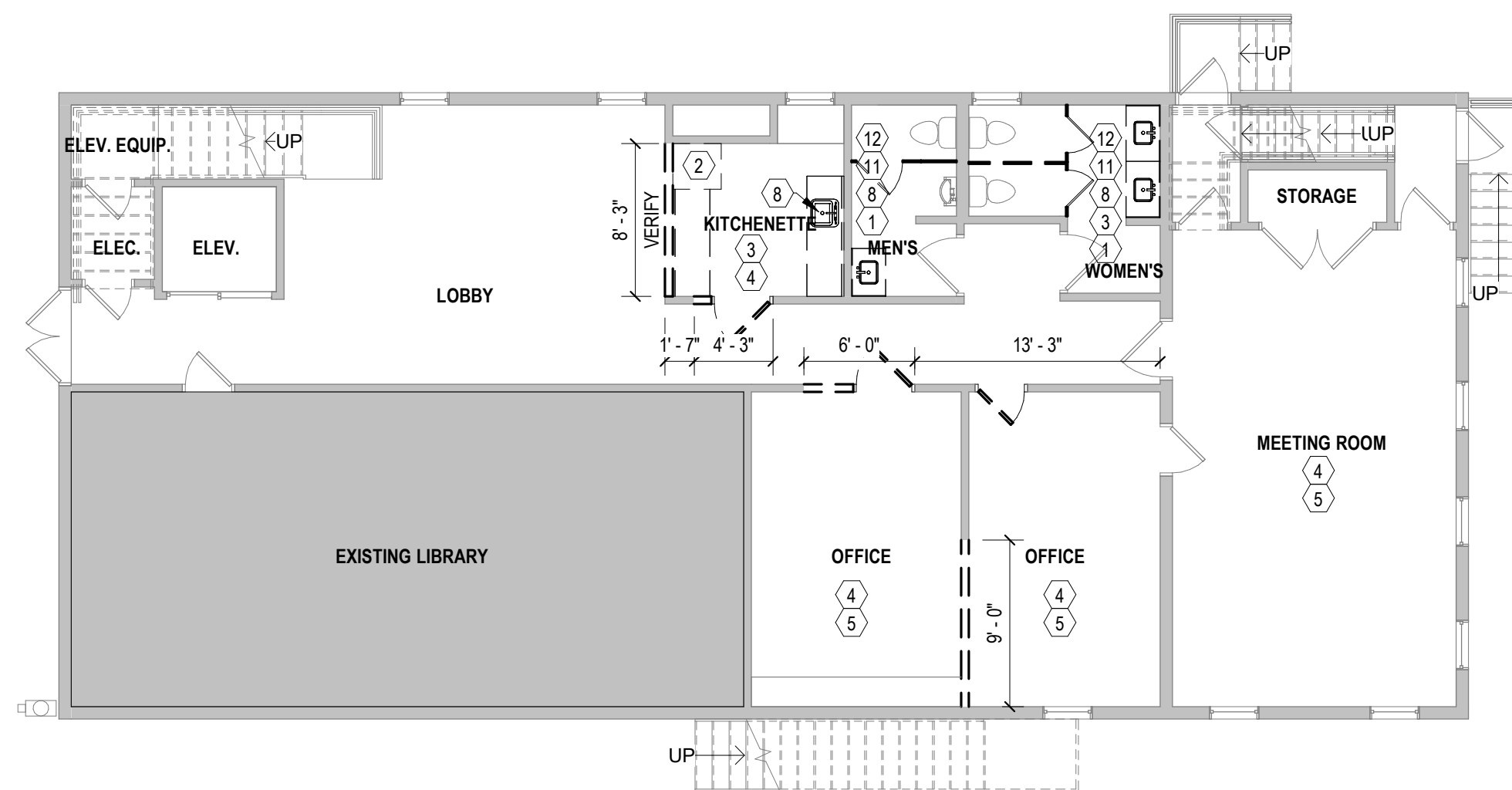


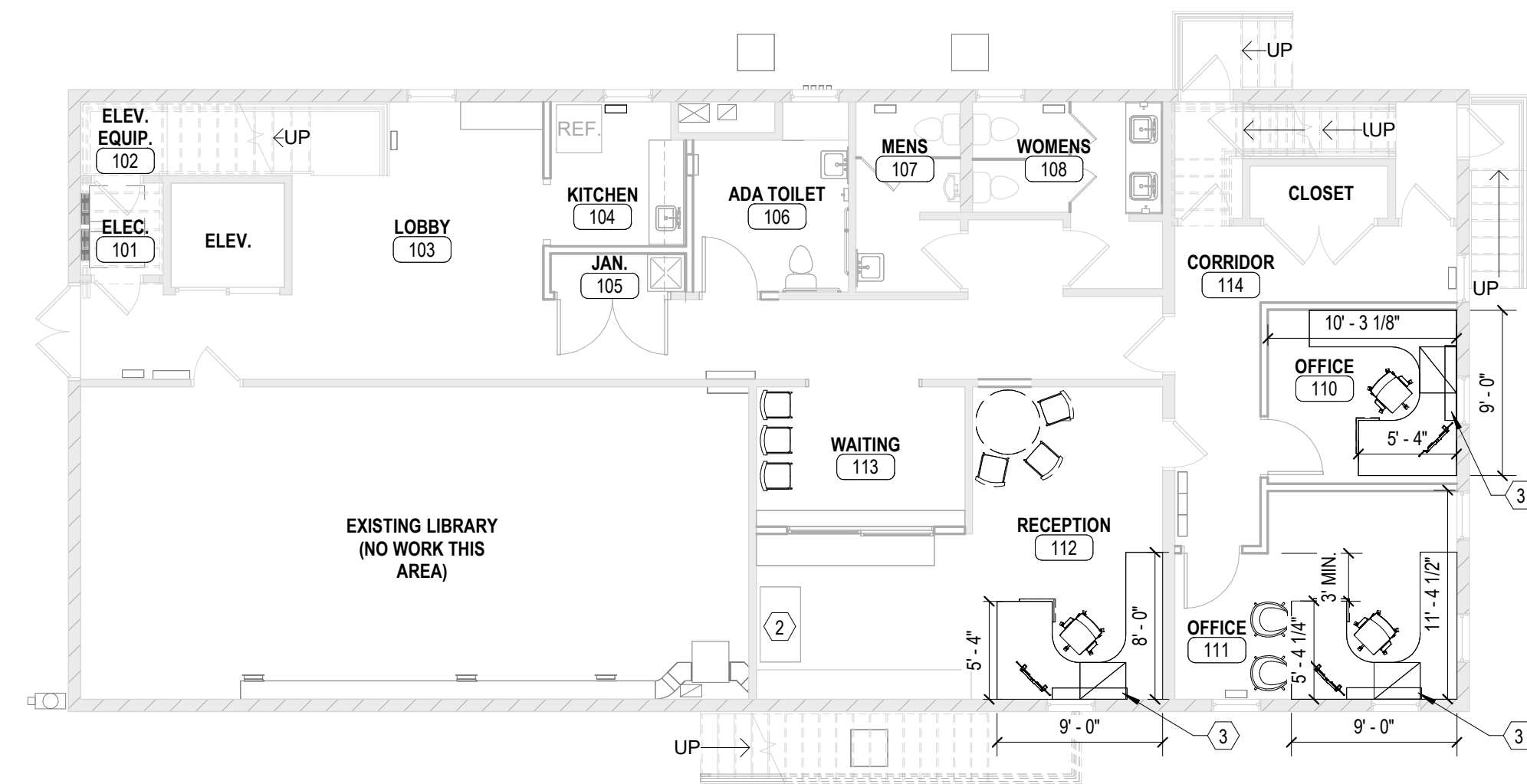
LEVEL 1 REFLECTED CEILING PLAN
1/8" = 1'-0"



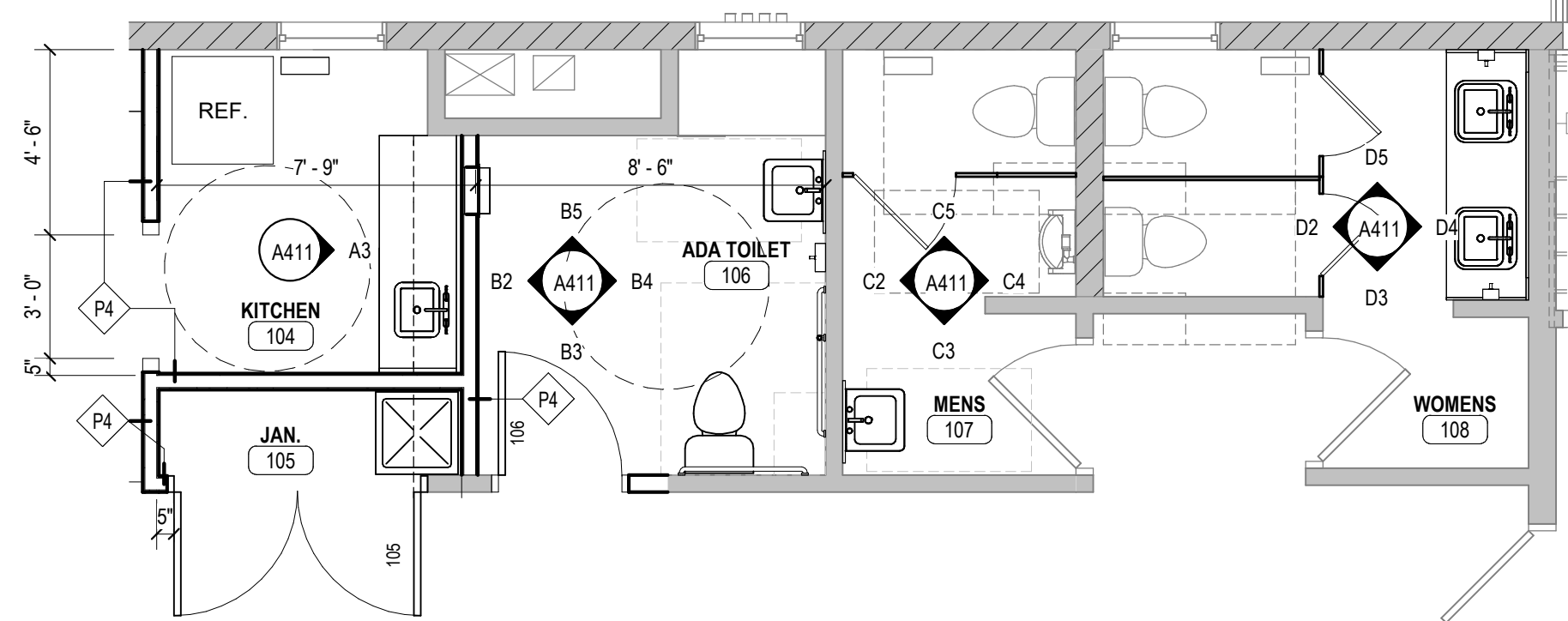
LEVEL 1 FLOOR PLAN
1/8" = 1'-0"



LEVEL 1 DEMOLITION PLAN
1/8" = 1'-0"



LEVEL 1 FURNITURE PLAN - FOR REFERENCE ONLY (BY OWNER)
1/8" = 1'-0"



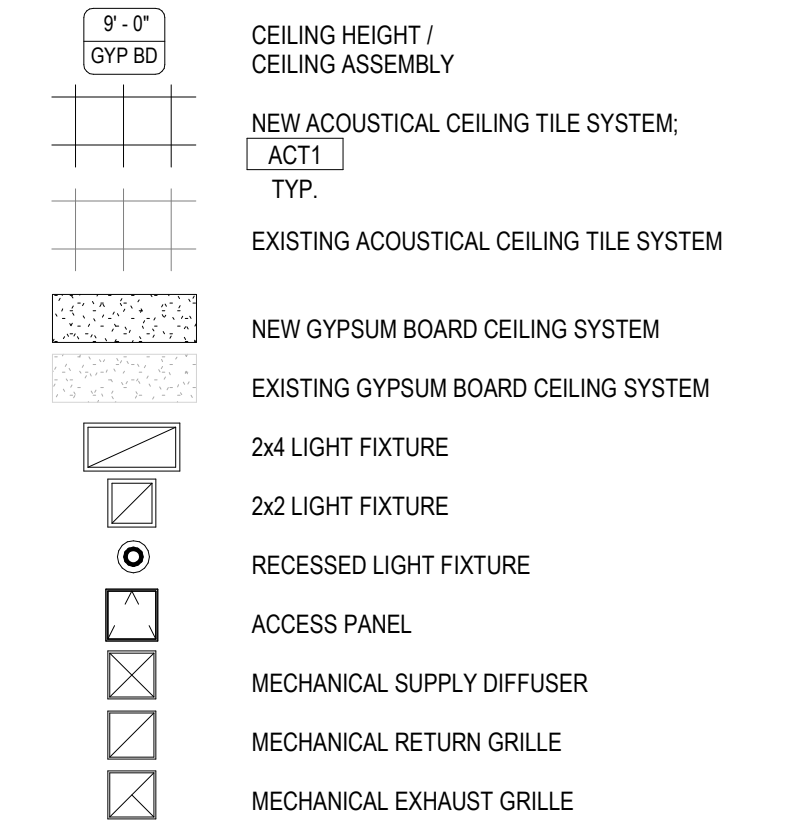
LEVEL 1 FLOOR PLAN - ENLARGED PLAN
1/4" = 1'-0"

KEYED SHEET NOTES

- 1 REMOVE EXISTING WALL & FLOOR FINISHES, PREP FOR NEW
- 2 REMOVE REFRIGERATOR
- 3 REMOVE EXISTING CASEWORK & COUNTERTOPS
- 4 REMOVE EXISTING ACT CEILING
- 5 REMOVE EXISTING FLOORING AND BASE AS REQUIRED FOR NEW FLOORING, SALVAGE FOR REUSE.
- 6 PATCH AND REPAIR WALL TO MATCH EXISTING ADJACENT IN ALL ASPECTS
- 7 ACCESS PANELS TO BE LOCATED AT EXISTING EXPOSED WIRED AND CONDUIT, COORDINATE WITH EXISTING LOCATIONS.
- 8 REMOVE EXISTING PLUMBING
- 9 HISTORIC HUTCH, COORDINATE WITH OWNER
- 10 ALIGN
- 11 REMOVE TOILET PARTITIONS
- 12 REMOVE EXISTING GYP. CEILING
- 13 OFFICE DOOR TO BE 3" AWAY FROM NEW MECH. HEATING

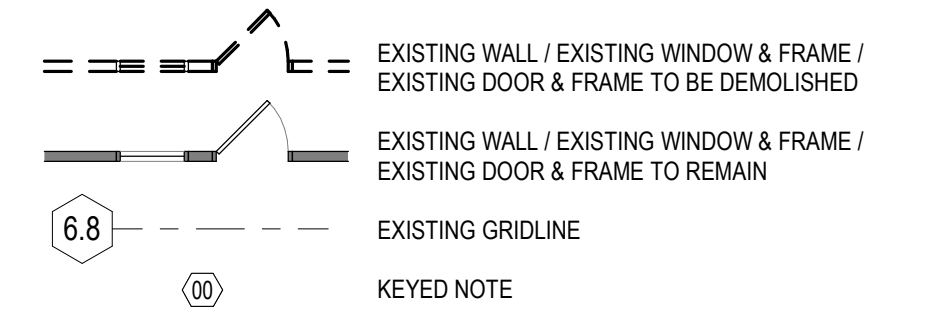
REFLECTED CEILING PLAN LEGEND

NOTE: NOT ALL SYMBOLS MAY BE USED ON EACH PLAN / DRAWING. REFER TO MECHANICAL AND ELECTRICAL DRAWINGS FOR ADDITIONAL SYMBOLS.



DEMOLITION PLAN LEGEND

NOTE: NOT ALL SYMBOLS MAY BE USED ON EACH PLAN / DRAWING.

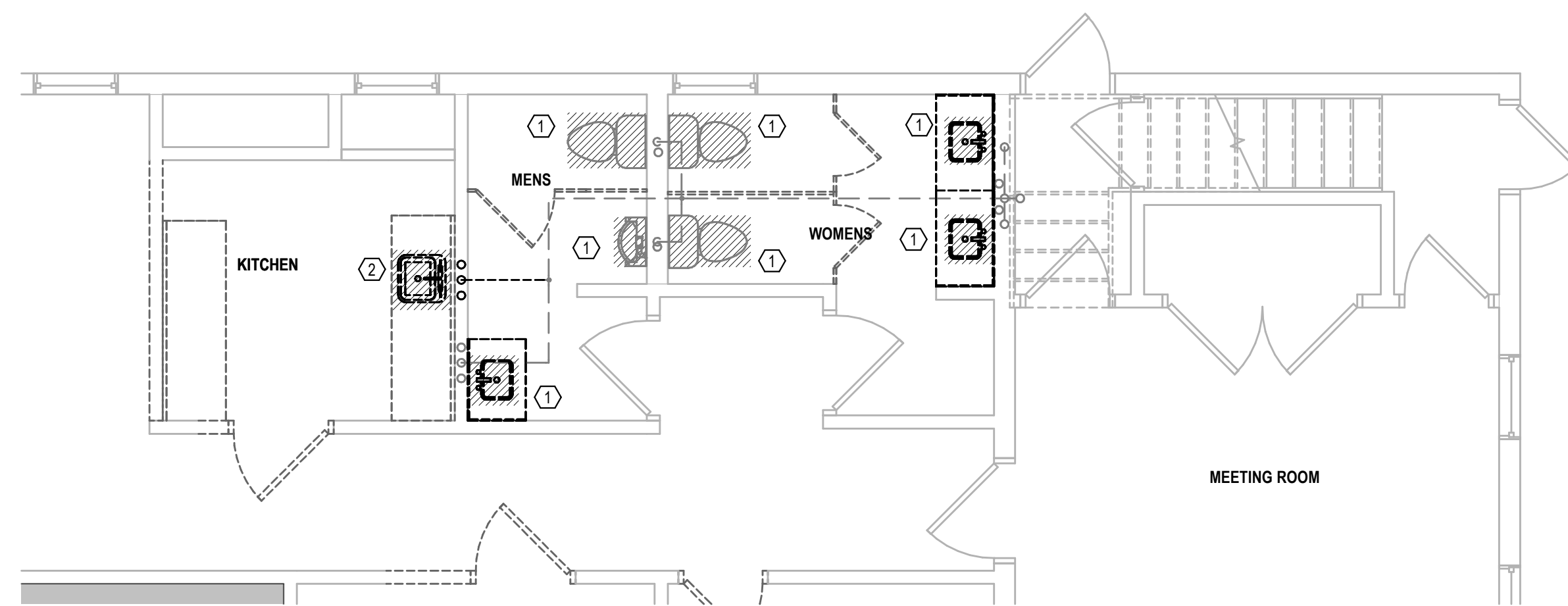


GENERAL SHEET NOTES

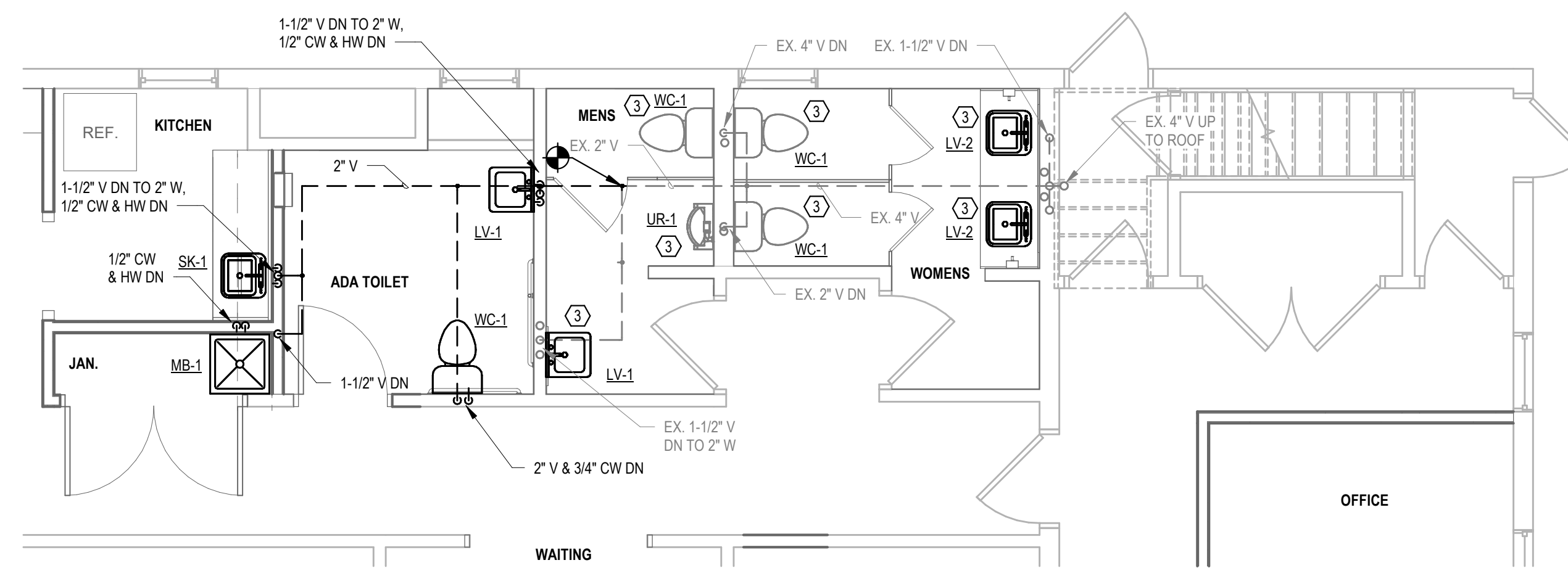
- A. NOTE
- B. NOTE

KEYED SHEET NOTES

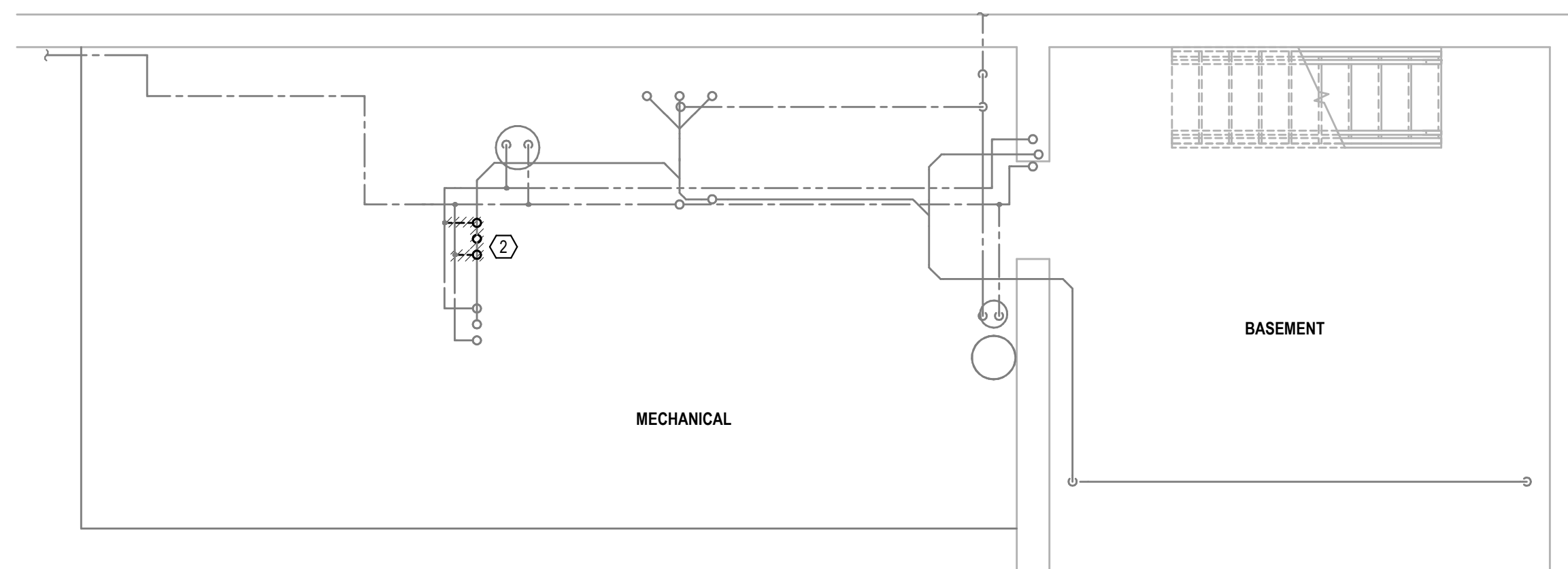
- 1. REMOVE EXISTING PLUMBING FIXTURE AND ASSOCIATED TRIM, PREPARE EXISTING PIPING FOR NEW CONNECTIONS.
- 2. REMOVE EXISTING PLUMBING FIXTURE AND ASSOCIATED TRIM, REMOVE DOMESTIC AND SANITARY PIPING TO BEHIND WALL SURFACE AND CAP, REMOVE SANITARY AND DOMESTIC PIPING WHERE EXPOSED BACK TO MAINS AND CAP.
- 3. CONNECT NEW FIXTURE TO EXISTING DOMESTIC AND SANITARY PIPING.



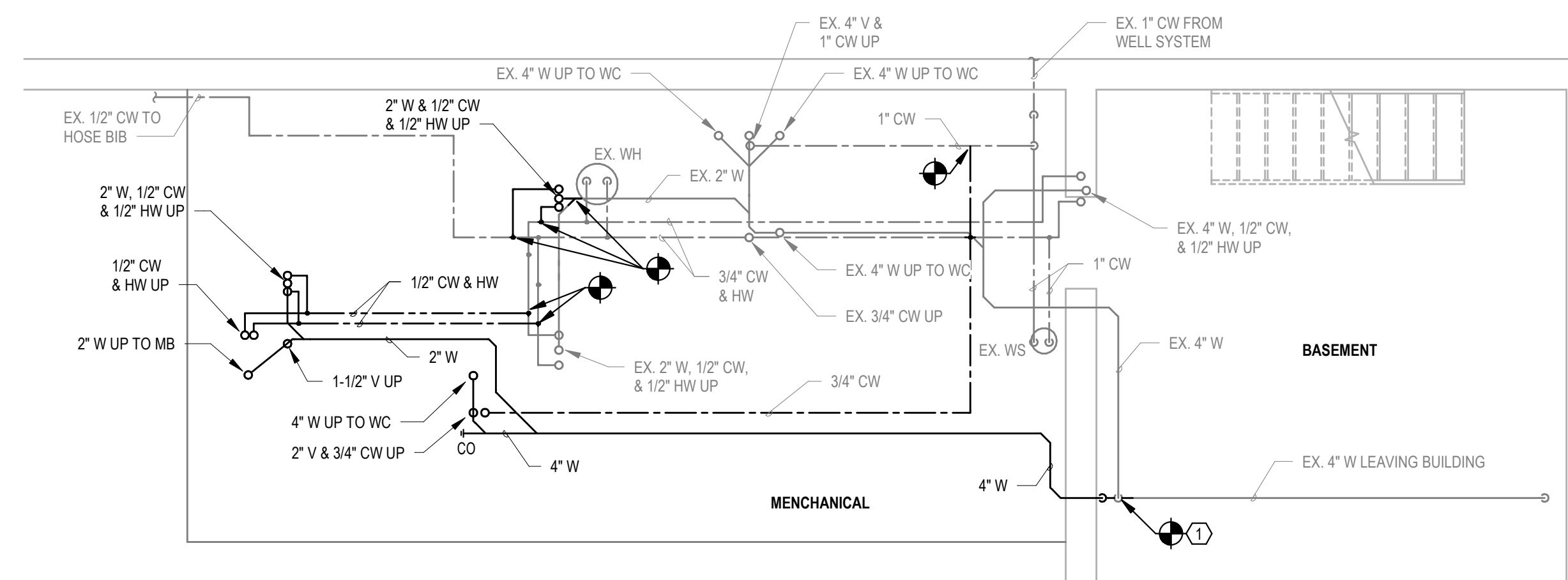
ENLARGED LEVEL 1 PLUMBING DEMOLITION PLAN
1/4" = 1'-0"



ENLARGED LEVEL 1 PLUMBING PLAN
1/4" = 1'-0"



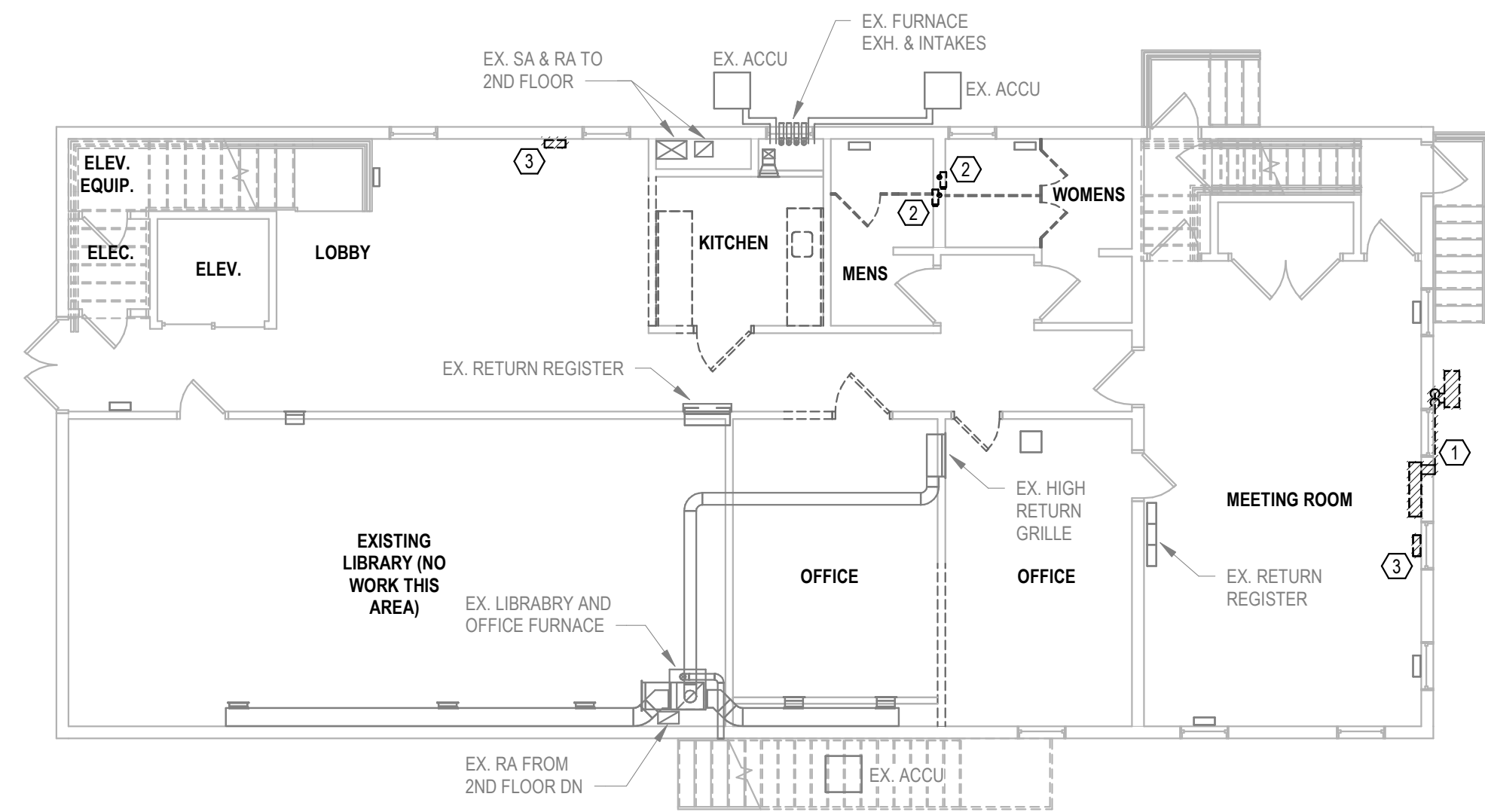
ENLARGED BASEMENT PLUMBING DEMOLITION PLAN
1/4" = 1'-0"



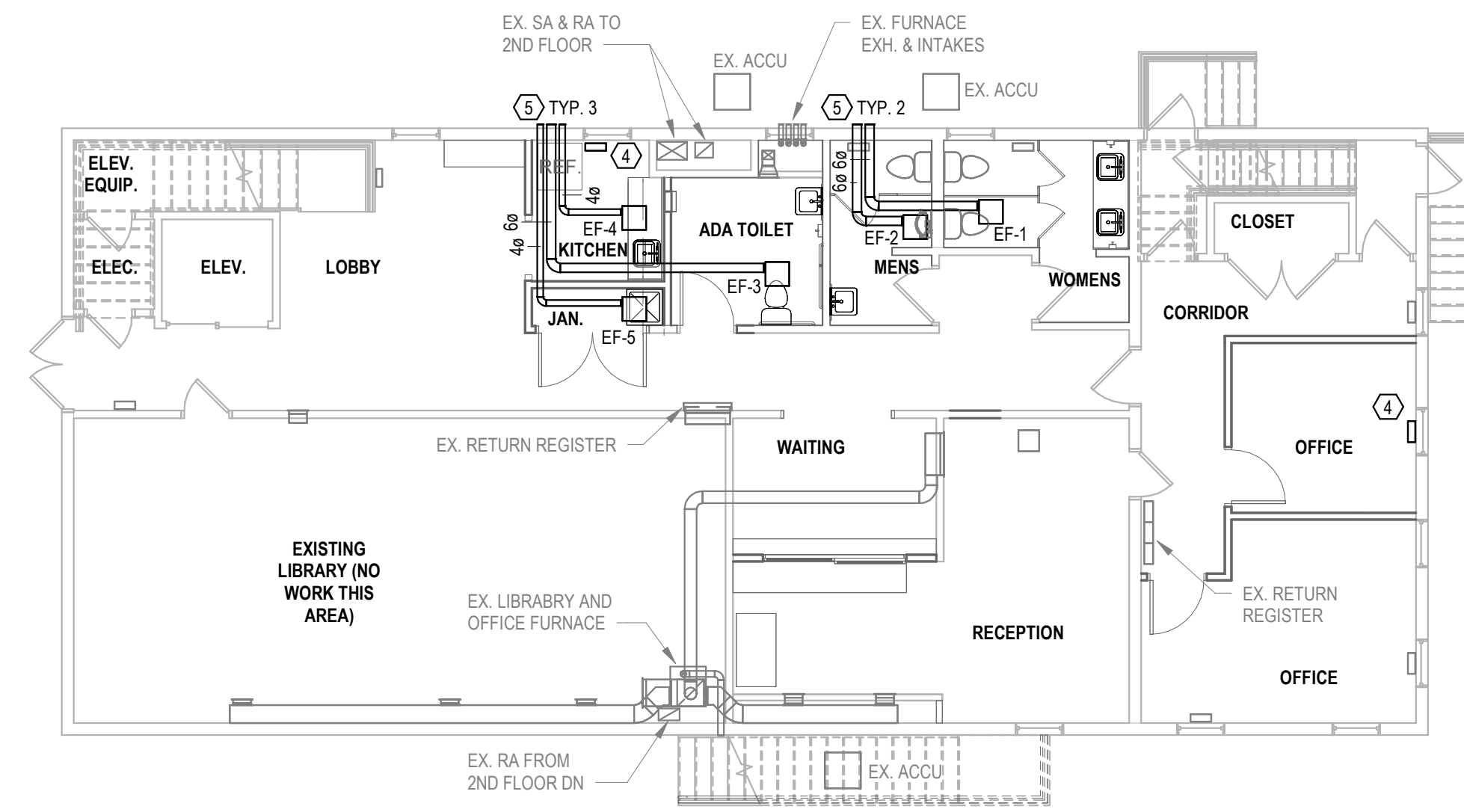
ENLARGED BASEMENT PLUMBING PLAN
1/4" = 1'-0"

| GENERAL SHEET NOTES | |
|---------------------|------|
| A. | NOTE |
| B. | NOTE |

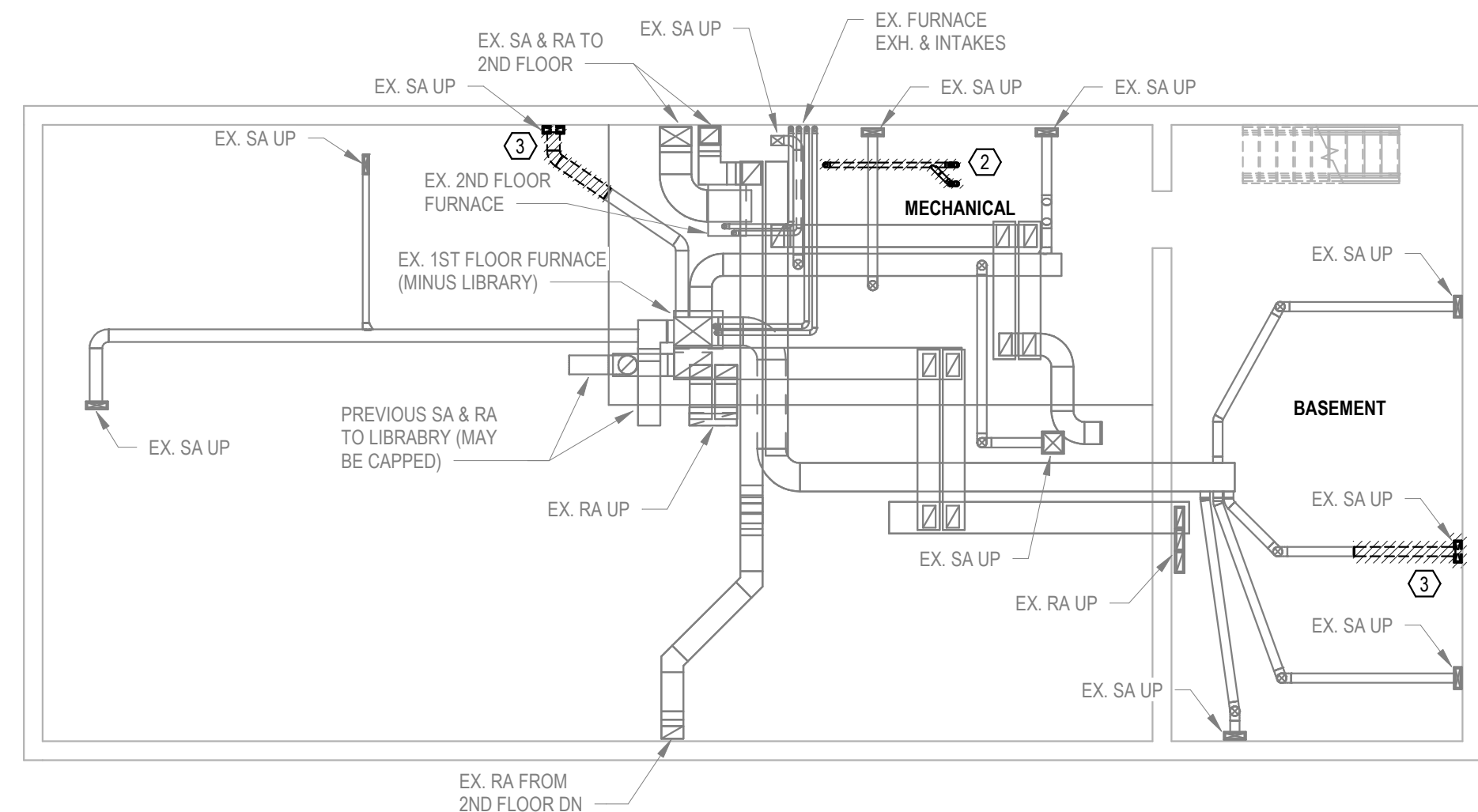
| KEYED SHEET NOTES | |
|-------------------|--|
| 1. | REMOVE EXISTING MINI-SPLIT AC UNIT, ACCU ON GRADE, ASSOCIATED PIPING AND CONTROLS. EVACUATE AND RECOVER REFRIGERANT AND DISPOSE OF AT A PROPER FACILITY. |
| 2. | REMOVE EXISTING BATHROOM EXHAUST FANS AND ASSOCIATED DUCTWORK AS MUCH AS POSSIBLE WITHOUT REMOVING FINISHED WALL. |
| 3. | CAREFULLY REMOVE AND STORE EXISTING FLOOR REGISTER AND ASSOCIATED DUCTWORK FOR RELOCATION. |
| 4. | REINSTALL EXISTING FLOOR REGISTER IN NEW LOCATION, MATCH EXISTING DUCT SIZE AND RECONNECT TO EXISTING DUCTWORK BELOW. |
| 5. | EXHAUST OUTLET, PROVIDE WITH BACKDRAFT DAMPER, BIRD SCREEN, AND WEATHER HOOD. |



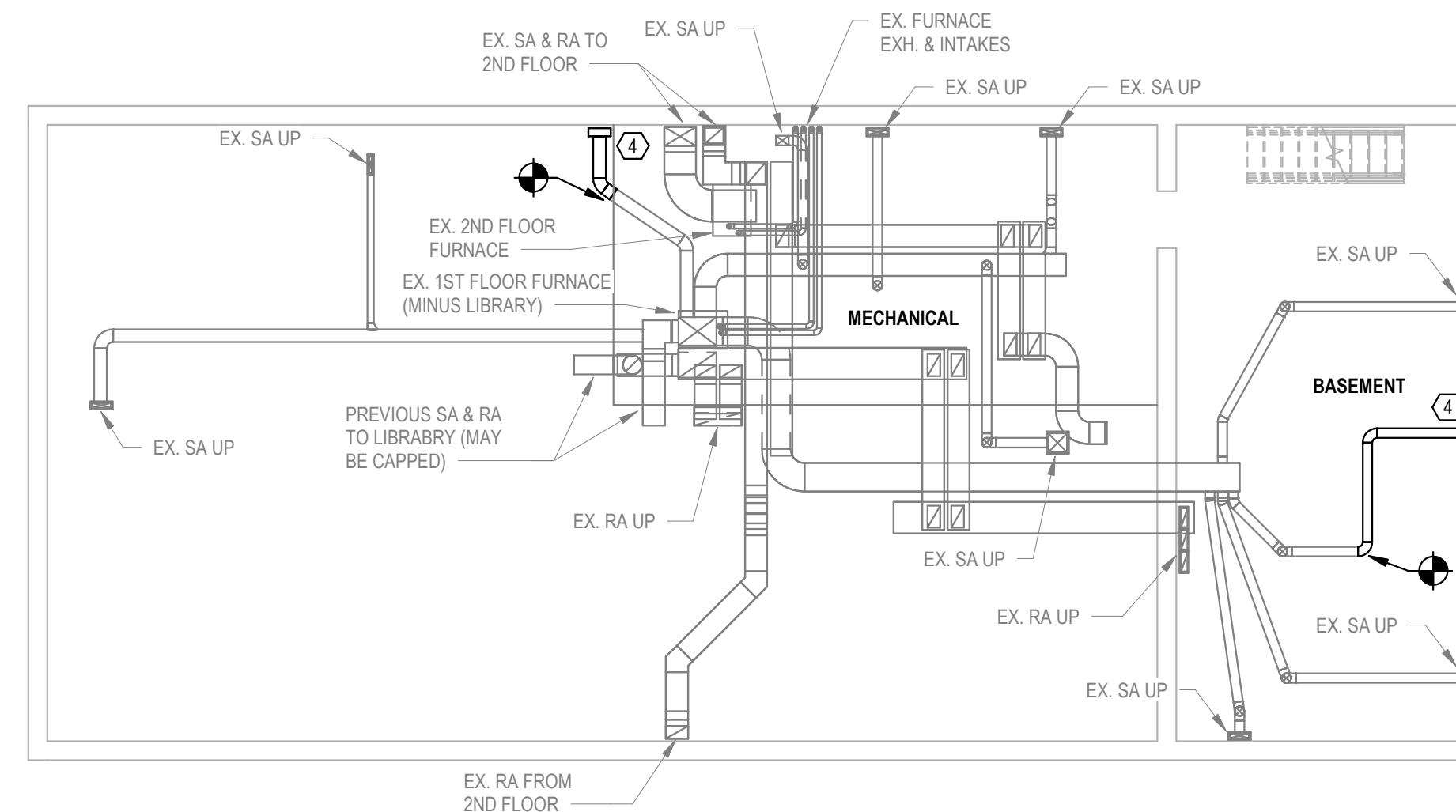
LEVEL 1 MECHANICAL DEMOLITION PLAN
1/8" = 1'-0"



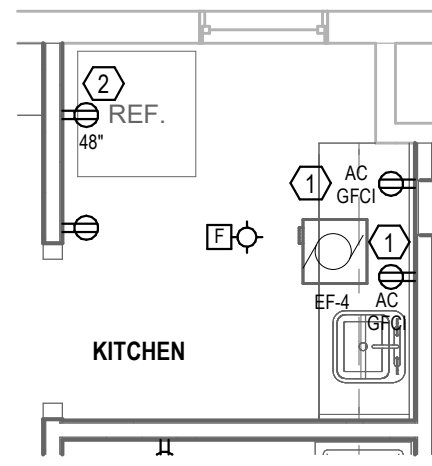
LEVEL 1 MECHANICAL PLAN
1/8" = 1'-0"



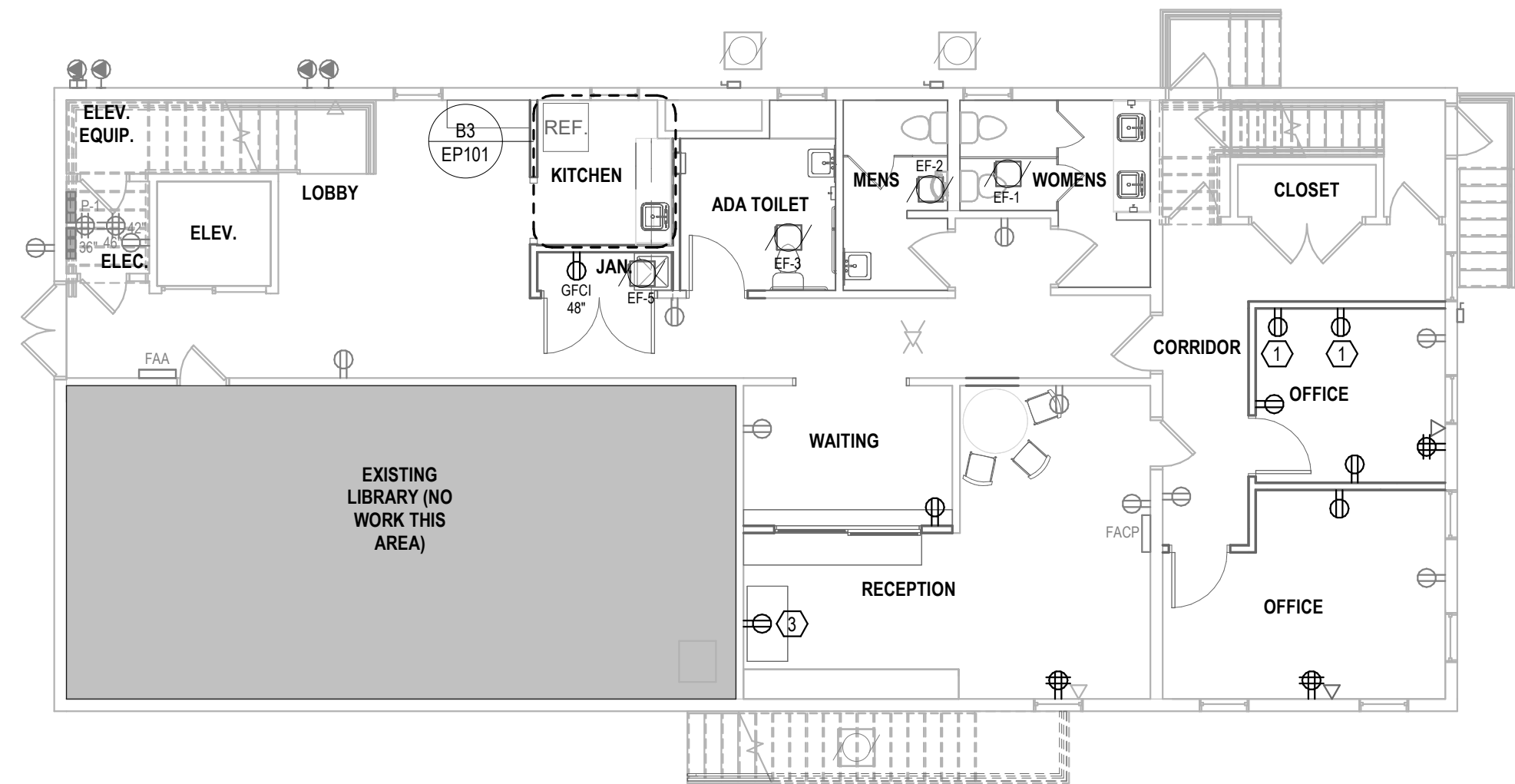
BASEMENT MECHANICAL DEMOLITION PLAN
1/8" = 1'-0"



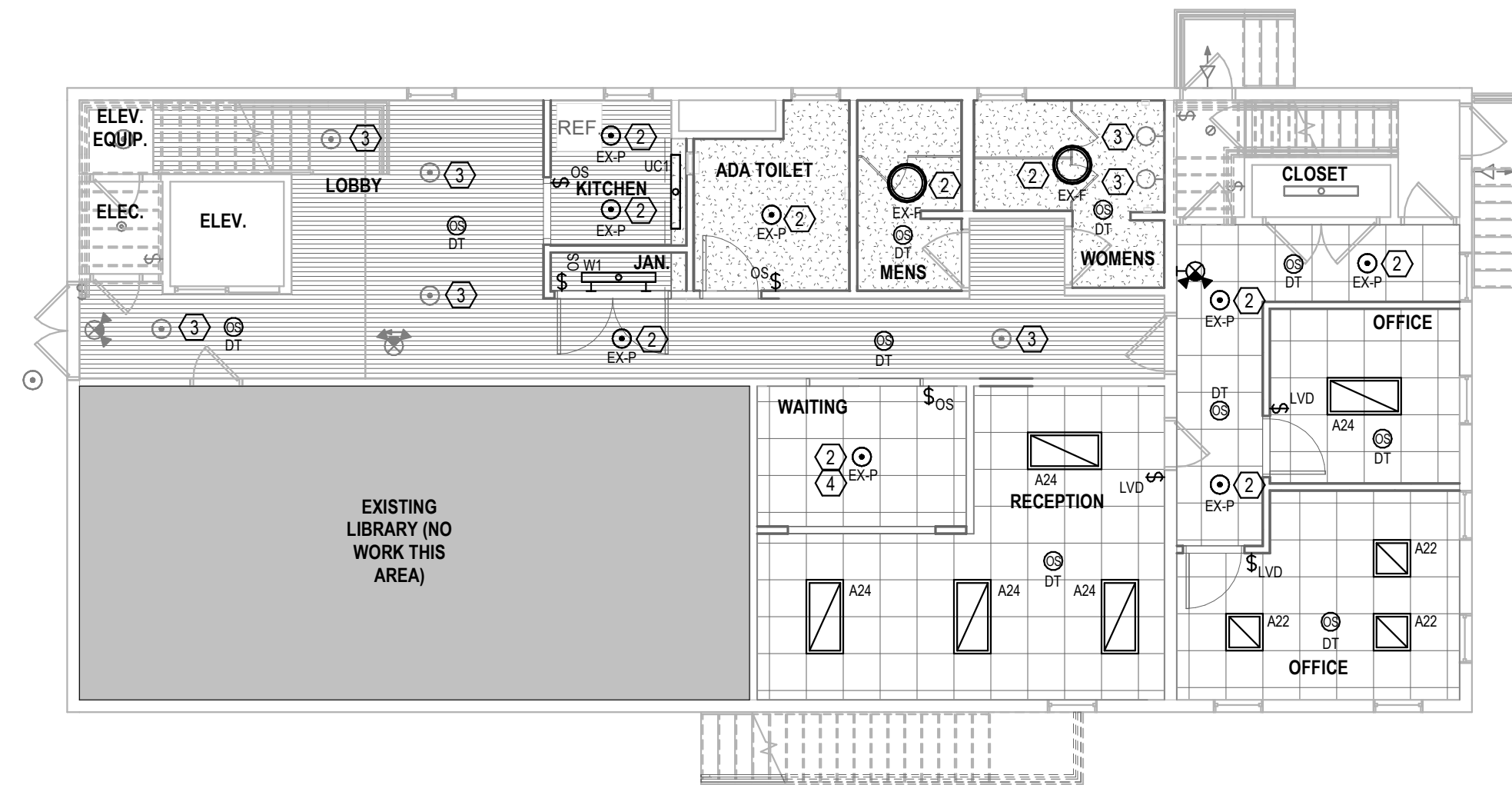
BASEMENT MECHANICAL PLAN
1/8" = 1'-0"



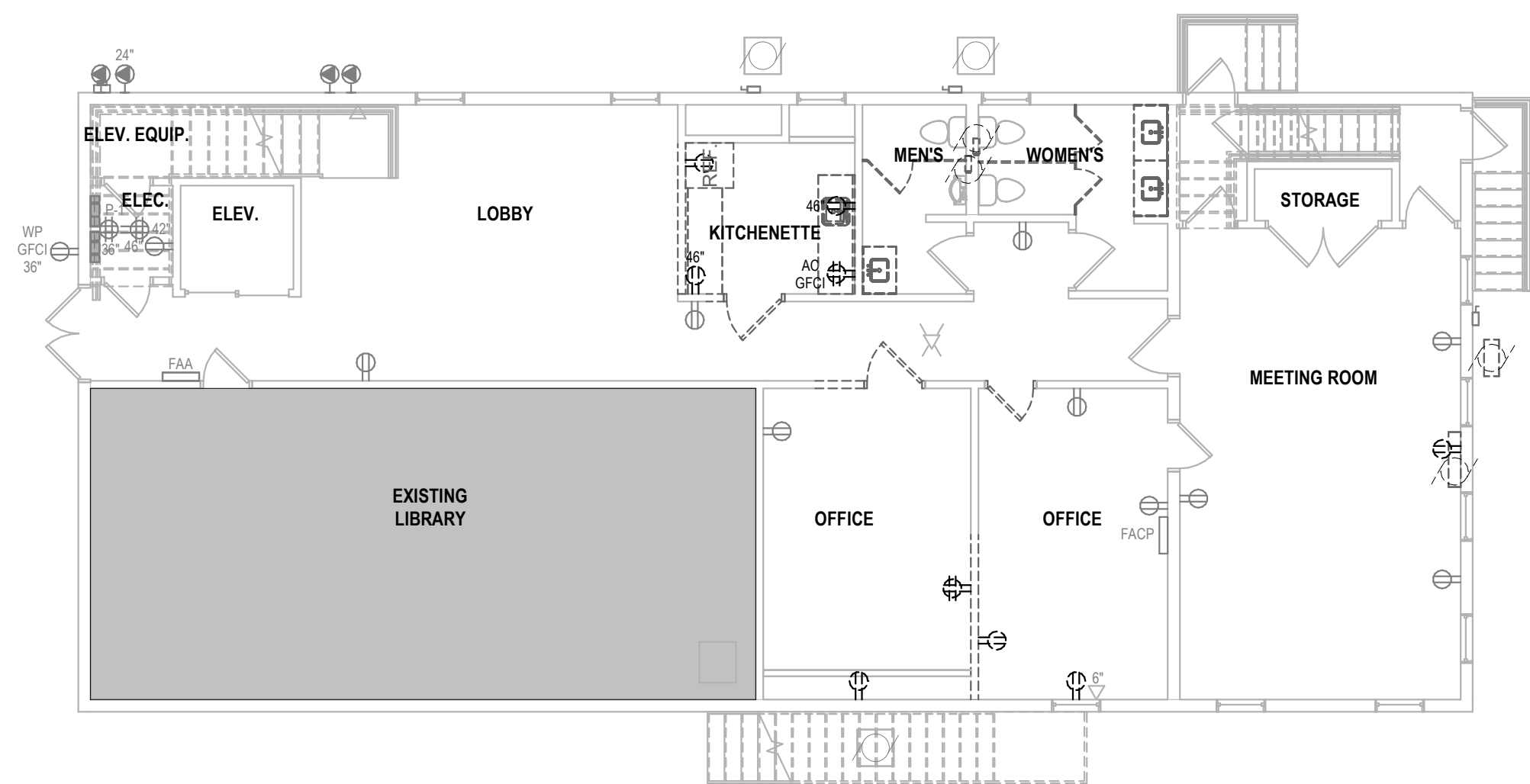
ENLARGED ELECTRICAL PLAN - KITCHEN
1/4" = 1'-0"



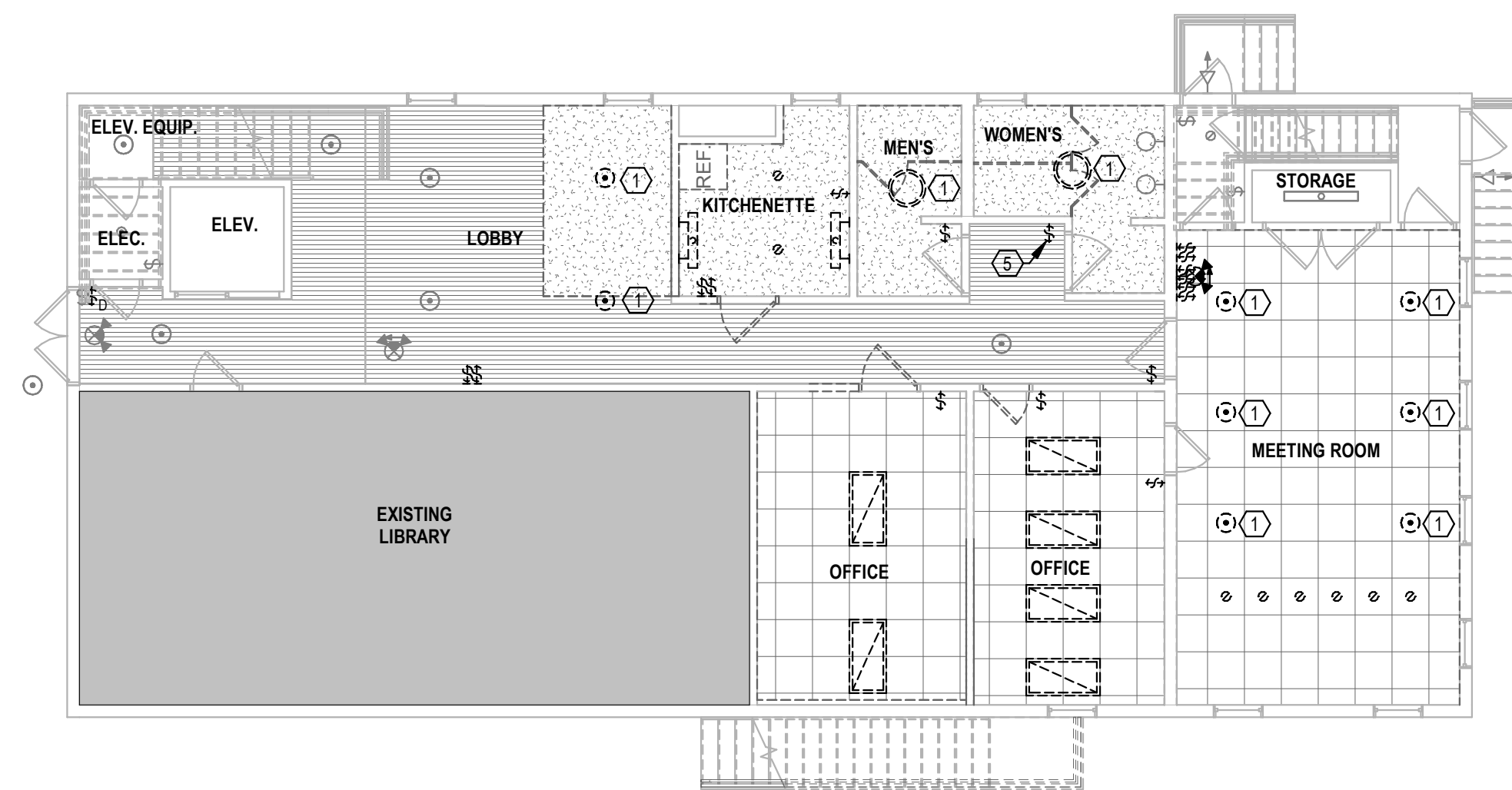
LEVEL 1 POWER PLAN
1/8" = 1'-0"



LEVEL 1 LIGHTING PLAN
1/8" = 1'-0"



LEVEL 1 POWER DEMOLITION PLAN
1/8" = 1'-0"



LEVEL 1 LIGHTING DEMOLITION PLAN
1/8" = 1'-0"

GENERAL SHEET NOTES

- A. REFER TO ARCHITECTURAL DRAWINGS AND SPECIFICATIONS FOR PHASES OF DEMOLITION. COORDINATE WITH GENERAL CONSTRUCTION.
- B. EXISTING ELECTRICAL DEVICES AND EQUIPMENT SHOWN ON THIS DRAWING ARE BASED ON CASUAL FIELD OBSERVATION AND EXISTING DRAWINGS (IF AVAILABLE). IT IS THE ELECTRICAL CONTRACTOR'S RESPONSIBILITY, PRIOR TO BIDDING, TO FIELD VERIFY EXISTING CONDITIONS TO DETERMINE THE EXTENT OF THE ELECTRICAL DEMOLITION WORK REQUIRED.
- C. DISCONNECT AND REMOVE ELECTRICAL DEVICES AND EQUIPMENT IN PROJECT AREA, AS SHOWN. REMOVE ASSOCIATED CONDUIT AND WIRING BACK TO LAST REMAINING DEVICE, UNLESS NOTED OTHERWISE. PROVIDE NEW CONDUIT AND WIRING AS NECESSARY FOR CONTINUITY OF FEEDERS/ BRANCH CIRCUITS TO ELECTRICAL DEVICES AND / OR EQUIPMENT TO REMAIN, COORDINATE AND VERIFY REQUIREMENTS WITH NEW WORK IN AREA.
- D. PROVIDE CONDUIT AND ELECTRICAL WIRING AS NECESSARY FOR CONTINUITY OF FEEDERS / BRANCH CIRCUITS ORIGINATING OUTSIDE THE DEMOLITION AREA THAT SERVE ANY ELECTRICAL DEVICES AND / OR EQUIPMENT TO REMAIN.
- E. PROVIDE BLANK COVERPLATES FOR EXISTING UNUSED JUNCTION BOX OPENINGS TO REMAIN.
- F. REFER TO "TYPICAL DEVICE MOUNTING DETAIL" FOR DEVICE MOUNTING HEIGHTS AND ADJACENCIES.
- G. REFER TO ARCHITECTURAL ELEVATIONS FOR EXACT WALL-MOUNTED DEVICE LOCATIONS.
- H. REFER TO EQUIPMENT SCHEDULES FOR SPECIFIC EQUIPMENT CONNECTION INFORMATION.
- I. PROVIDE ROUGH-IN FOR THE FOLLOWING SYSTEMS TO BE PROVIDED BY THE DIVISION 27 CONTRACTOR:
 - 1. TECHNOLOGY CABLING
 - 2. TECHNOLOGY EQUIPMENT ROOM COMPONENTS
 - 3. FIRE ALARM BACKBONE CABLING
- J. PROVIDE ROUGH-IN FOR THE FOLLOWING SYSTEMS TO BE PROVIDED BY THE DIVISION 28 CONTRACTOR:
 - 1. FIRE ALARM SYSTEM
- K. STUB TECHNOLOGY CONDUIT INTO ACCESSIBLE CEILING SPACE, UNLESS NOTED OTHERWISE.
- L. PROVIDE WORK FOR ALL ALTERNATE ITEMS (IF ANY). REFER TO NOTES ON DRAWINGS AND SPECIFICATIONS FOR ALTERNATE DESCRIPTIONS.

KEYED SHEET NOTES

- 1. PROVIDE DEDICATED CIRCUIT AND GFCI BREAKER AT PANEL.
- 2. PROVIDE DEDICATED CIRCUIT AND GFCI BREAKER AT PANEL FOR REFRIGERATOR.
- 3. PROVIDE DEDICATED CIRCUIT AND GFCI BREAKER AT PANEL FOR COPIER.