



MARINE ON ST. CROIX

MONTHLY NEWSLETTER | OCTOBER 2024



SUICIDE AWARENESS SQUAD



As part of National Suicide Prevention Month in September, the Sheriff's Office was proud to introduce its newest Suicide Awareness Squad. This squad officially hit the streets on Sept. 7, focused on raising awareness and preventing suicide by sharing a message of hope and promoting available resources. WCSO is proud to partner once again with **NAMI Washington County** (National Alliance on Mental Illness) for the squad's messaging, using the recognizable teal and purple colors to ensure the squad stands out.



If you or someone you know needs support, call or text the Suicide and Crisis Lifeline at 988, or visit www.nami.org.

NUMBER OF INCIDENTS

18

TRAFFIC STOPS

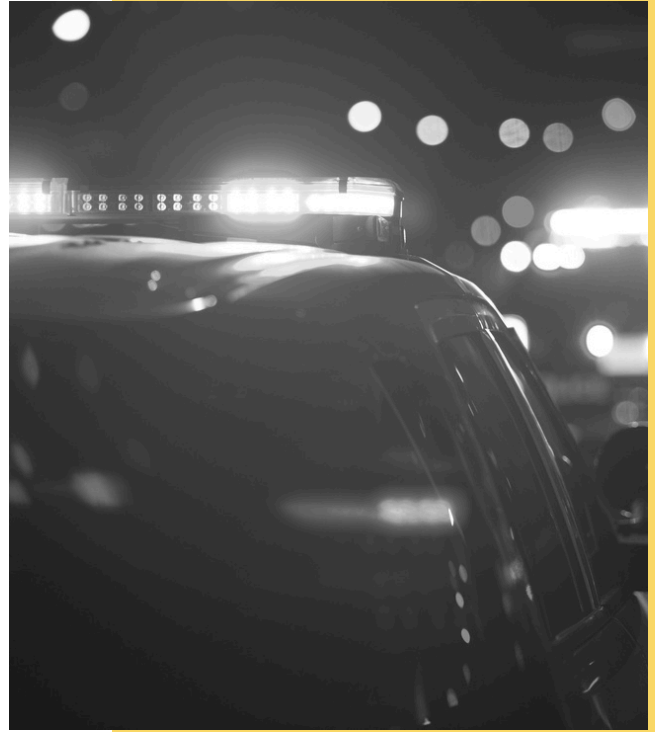
5

WC24050838

SUSPICIOUS ACTIVITY

2XXX ROSE STREET

At 12:33am on Sept. 16, deputies responded to a reported theft from a residence, with two female suspects driving away in a tan SUV. As a deputy was approaching the scene, an SUV matching the description drove past. A license plate check revealed a revoked driver's license, so another deputy made a traffic stop, and the SUV had two female occupants matching the general description provided by the resident. The first deputy spoke with the alleged victim, who said the two women entered the house while he was on the front porch and took \$300. The resident's speech was slurred and eyes bloodshot, and much of the story didn't make sense, so the deputy pressed him for details. The resident then admitted no crime had occurred. The deputy relayed this to the deputy at the traffic stop and the SUV occupants were free to go, with a citation for driving with no license.



MESSAGE FROM THE SHERIFF



In a dynamic organization, like our Sheriff's Office, continuous improvement and adaptability are essential to meet evolving challenges and to serve the needs of our communities. As we strive to ensure public safety, enhance operational efficiency, and support professional development, we'll have several transitions coming in early 2025. These will include sergeant changes for the Hugo, Lake Elmo, and Newport contracts, as well as for general Patrol and Investigations — each of which will have a positive impact for our communities. We're also excited to introduce our new Community Impact Unit (CIU), which will combine our SIU (Special Investigations Unit) and Patrol SET (Special Enforcement Team) units under one sergeant to more effectively address traffic safety and street-level community concerns, support other divisions, and assist with the apprehension of wanted persons.

After 30 years in public safety, I've seen how change promotes innovation, fresh perspectives, and new opportunities. By embracing these upcoming transitions, we'll cultivate a more responsive, agile, and resilient Sheriff's Office, ultimately enhancing our service delivery and strengthening our connection with the communities we serve.

In service,


Sheriff Dan Starry

Total for City MARINE ON SAINT CROIX: 18

Incident Date	Case#	Address	Event Description
9/2/2024 2:36:00 PM	WC24047989	XXX 5th St, MARINE ON SAINT CROIX	ALARM-BUSINESS/RES/FIRE/MEDICAL/ETC
9/3/2024 9:43:00 AM	WC24048148	16XXX -17129 SAINT CROIX TRL N, MARINE ON SAINT CROIX	TRAFFIC STOP
9/3/2024 3:41:00 PM	WC24048213	SAINT CROIX TRL N / MAPLE ST, MARINE ON SAINT CROIX	TRAFFIC STOP
9/6/2024 4:21:23 PM	WC24048839	XXX 5th St, MARINE ON SAINT CROIX	MEDICAL
9/11/2024 1:09:00 PM	WC24049771	Judd St / Berkey St, MARINE ON SAINT CROIX	ANIMAL COMPLAINT
9/13/2024 10:11:00 PM	WC24050264	Hwy 95 At Butternut Falls Trl, MARINE ON SAINT CROIX	TRAFFIC COMPLAINT
9/14/2024 12:07:00 PM	WC24050504	XXX PINE ST, MARINE ON SAINT CROIX	MEDICAL
9/14/2024 3:52:00 PM	WC24050532	XXX Broadway St, MARINE ON SAINT CROIX	ANIMAL COMPLAINT
9/15/2024 2:54:59 PM	WC24050725	XXX Rosabelle St, MARINE ON SAINT CROIX	MEDICAL
9/16/2024 12:33:00 AM	WC24050838	XXX Rose St, MARINE ON SAINT CROIX	CITIZEN/PUBLIC ASSIST
9/17/2024 9:20:23 AM	WC24051034	XXX Judd St, MARINE ON SAINT CROIX	FOUND PROPERTY/ITEM
9/17/2024 6:06:24 PM	WC24051153	XXX 5th St, MARINE ON SAINT CROIX	MEDICAL
9/22/2024 6:22:00 AM	WC24046299	XXX Judd St, MARINE ON SAINT CROIX	MEDICAL
9/22/2024 7:56:57 AM	WC24052105	17XXX -17249 SAINT CROIX TRL N, MARINE ON SAINT CROIX	DIRECTED PATROL
9/27/2024 10:11:15 AM	WC24053154	XXX 5th St, MARINE ON SAINT CROIX	ALARM-BUSINESS/RES/FIRE/MEDICAL/ETC
9/27/2024 3:51:00 PM	WC24053207	SAINT CROIX TRL N / MAPLE ST, MARINE ON SAINT CROIX	TRAFFIC STOP
9/27/2024 7:45:35 PM	WC24053275	XXX Judd St, MARINE ON SAINT CROIX	FOLLOW UP
9/28/2024 2:53:58 PM	WC24053433	XXX Oak Knoll Dr, MARINE ON SAINT CROIX	911 ABANDONED/HANGUP/OPEN LINE

WASHINGTON COUNTY SHERIFFS OFFICE

15015 62nd St N Stillwater, MN 55082

Tel: 651-430-7600

Advanced Parameters

Citation CreatedOn within previous month
and CitationOfficer involvementType_Des... does not contain Approv
and CitationEvent address_city_Description starts with Marine on Saint Croix
and Citation CreatedOn within 1 September, 2024 and 30 September, 2024 23:59
and Citation AgencyId is in list 6f1669a5-0a35-c258-d76d-08d46d84660b

Results (4 unique records)

Number	Case Number	Officer	Street Address	Cross Street	City	Violation	Type	Created On	Officer Involvement
820020242596	WC24048148	Tellez, Miguel X WC115	16951-17129 SAINT CROIX TRL N	BERKEY ST/MAPLE ST	MARINE ON SAINT CROIX	169.14.2(a)(3) Traffic - Speeding - Exceed Limit 55 mph Where Appropriate	MOVING VIOLATION	Sep 3, 2024, 12:49:57 PM	REPORT
820020242597	WC24048213	Oyaas, Allan K WC15207	SAINT CROIX TRL N / MAPLE ST		MARINE ON SAINT CROIX	169.14.2(a) Traffic - Speeding - Exceed Limit	MOVING VIOLATION	Sep 4, 2024, 8:36:02 AM	REPORT
820020242756	WC24050838	Zachrison, Alec A WC14938	251 Rose St	ROSABELLE ST/WILKE ST	MARINE ON SAINT CROIX	171.24.2 Traffic-Drivers License-Driving After Revocation	MOVING VIOLATION	Sep 16, 2024, 12:05:24 PM	REPORT
820020242897	WC24053207	Oyaas, Allan K WC15207	SAINT CROIX TRL N / MAPLE ST		MARINE ON SAINT CROIX	169.14.2(a) Traffic - Speeding - Exceed Limit	MOVING VIOLATION	Sep 30, 2024, 8:27:35 AM	REPORT